



DeviceLab
EXTRACTING VALUE

DeviceLab Payload Collector, - Getting started with Mioty!

About this Guide!

This Guide is written and illustrated based on the latest release version of the Payload Collector App available at the time of this Guides release.

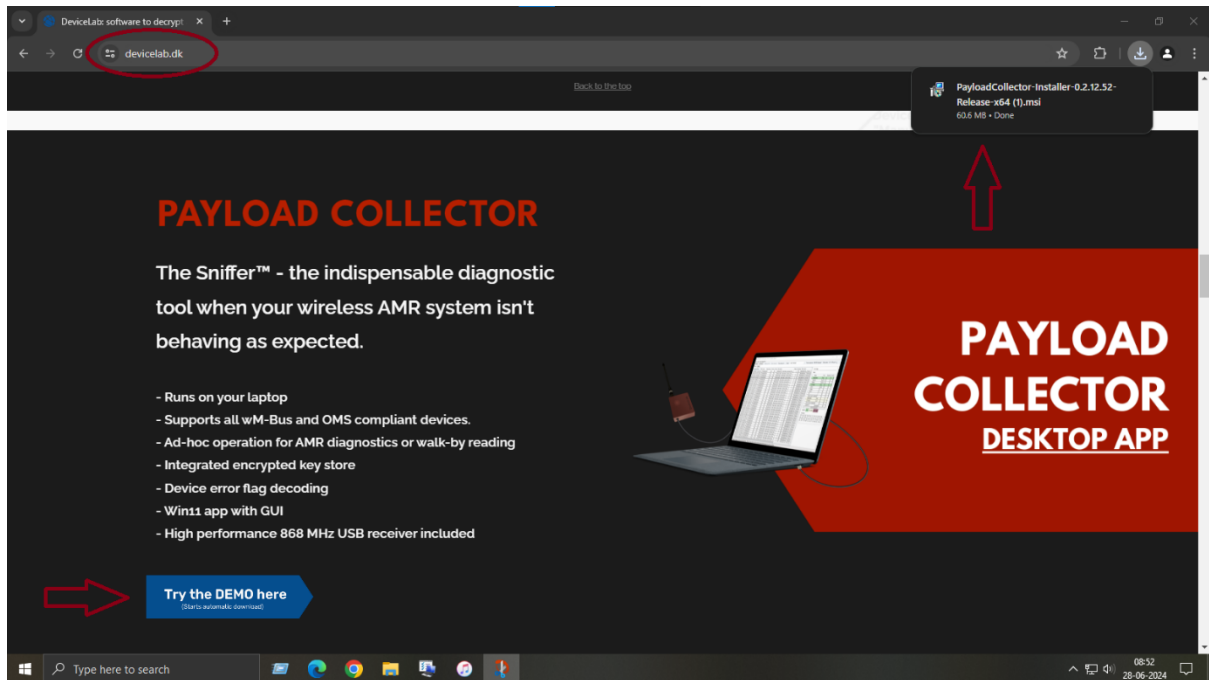
We are actively updating our Guides, but we reserve the right to deviate as updates to the Payload Collector App with fixes and new features may have been released since this Guide was published.

*Please visit our website: www.device lab.dk
or contact our support: support@device lab.dk
for the latest information.*

©2025 Device lab Aps. All rights reserved. You may view, download, or print this Guide from Device lab Aps. in part or in full. No reproduction in whole or in part is permitted without attribution.

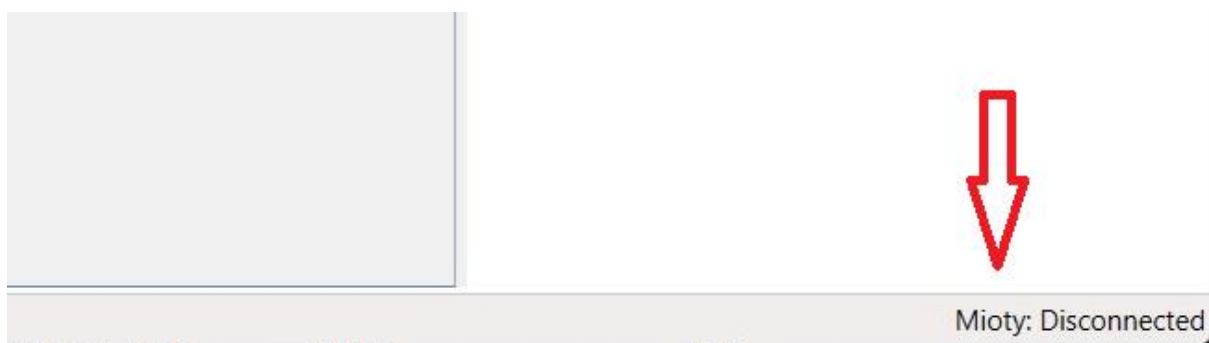


Find and download latest Payload Collector installation file on the DeviceLab website... <https://deviceLab.dk/>



Install it as described in "**DeviceLab Payload Collector, - Getting started!**" Guide.

Note! – that a Payload Mioty Collector license is required!
Open your Payload Collector and check if you have a Mioty License...
Mioty connection status is then visible in the lower right corner!





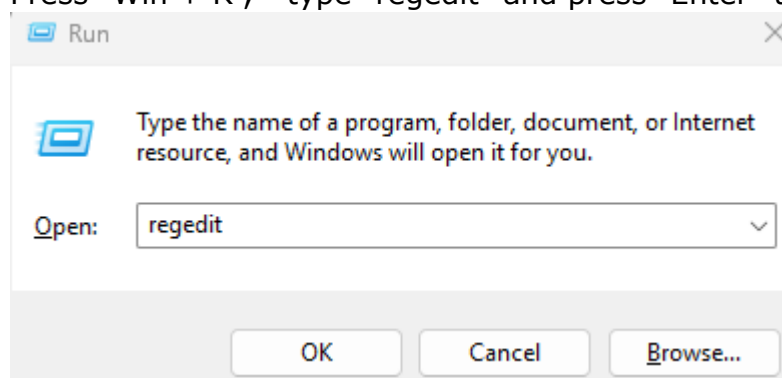
DeviceLab

EXTRACTING VALUE

A) If it's a new installation, then follow the Payload Collector installation guide. Copy your "Machine code" and mail it to "info@devicelab.dk" to get your Mioty license key.

B) If you have a running Payload Collector, you must find you "Machine Code"

Press "Win + R", - type "regedit" and press "Enter" to start "Registry Editor"



Go to: *Computer\HKEY_CURRENT_USER\Software\DeviceLab\CollectorApp*
Find "LicenseCode", right-click and rename it to eg. "_LicenseCode".

Name	Type	Data
(Default)	REG_SZ	(value not
LicenseCode	REG_SZ	1gCAAIR5
MasterSalt	REG_BINARY	56 ad af e(
MasterTest	REG_BINARY	79 cc df 9!
SerialPortName	REG_SZ	COM3
SnifferType	REG_SZ	lansen
WmbusMode	REG_SZ	mode_tc

Name	Type	Data
(Default)	REG_SZ	(value no
License		1gCAAIR!
Master		56 ad af e
Master		79 cc df 9
SerialPo		COM3
SnifferT		lansen
Wmbus		mode_tc

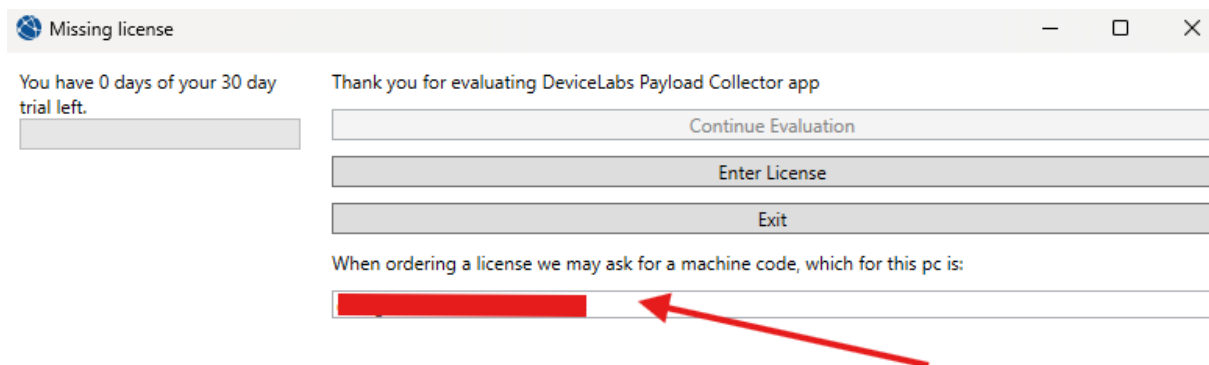


DeviceLab

EXTRACTING VALUE

Name	Type	Data
ab (Default)	REG_SZ	(value
ab _LicenseCode	REG_SZ	1gCAA
oi MasterSalt	REG_BINARY	56 ad a
oi MasterTest	REG_BINARY	79 cc d
ab SerialPortName	REG_SZ	COM3
ab SnifferType	REG_SZ	lansen
ab WmbusMode	REG_SZ	mode_

Start your "Payload Collector" App.

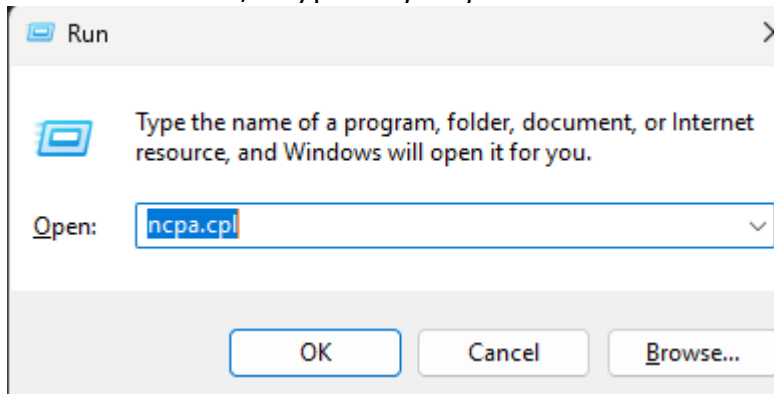


Copy your "Machine Code" and mail it to info@devicelab.dk, to get your Mioty license key.

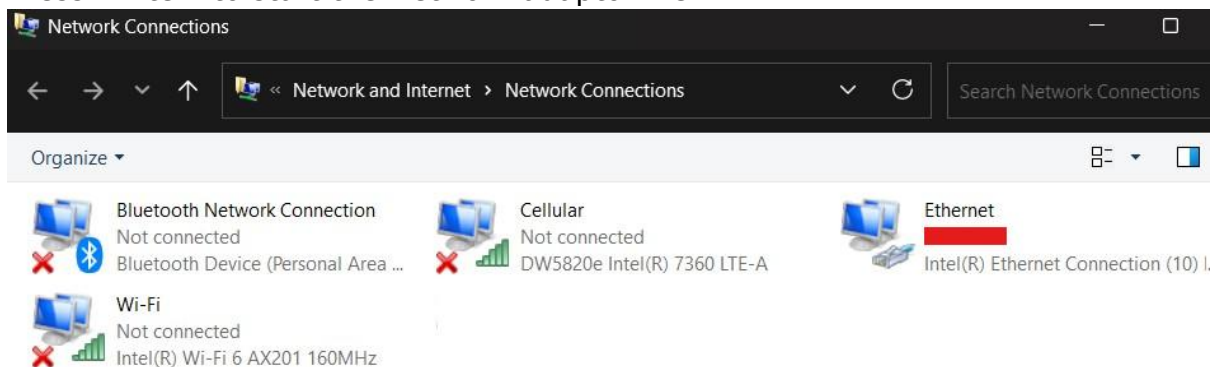


Installation and first run of your Mioty Collector device.

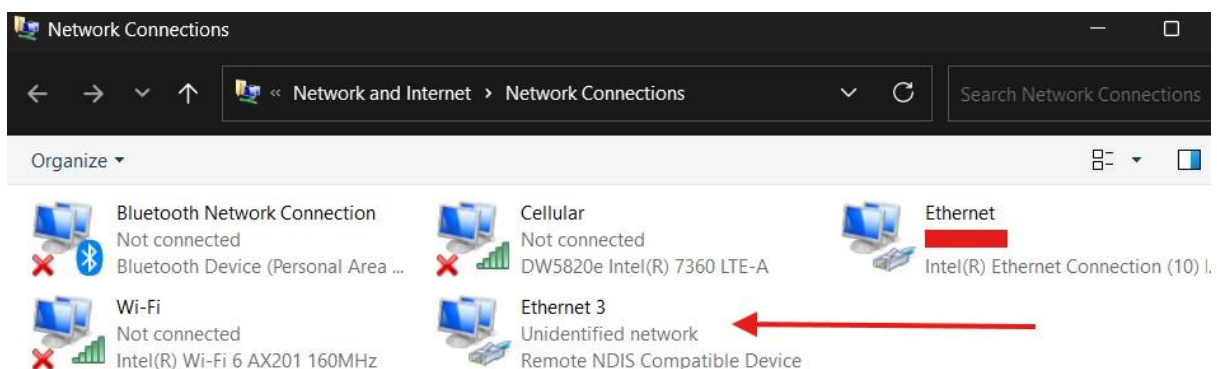
Press "Win + R", - type "ncpa.cpl" ...



Press "Enter" to start the Network adaptor view!



Connect your Mioty Collector device via it's USB-C port to a USB port on your PC. Shortly after a new network adaptor pops-up!



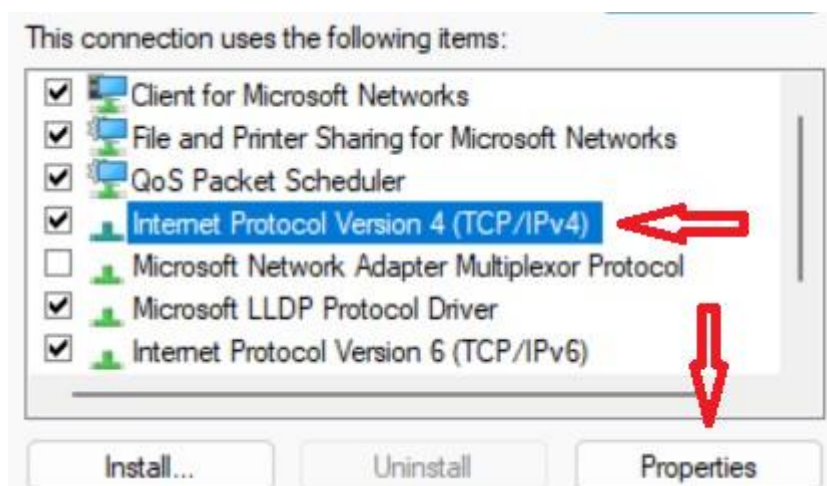
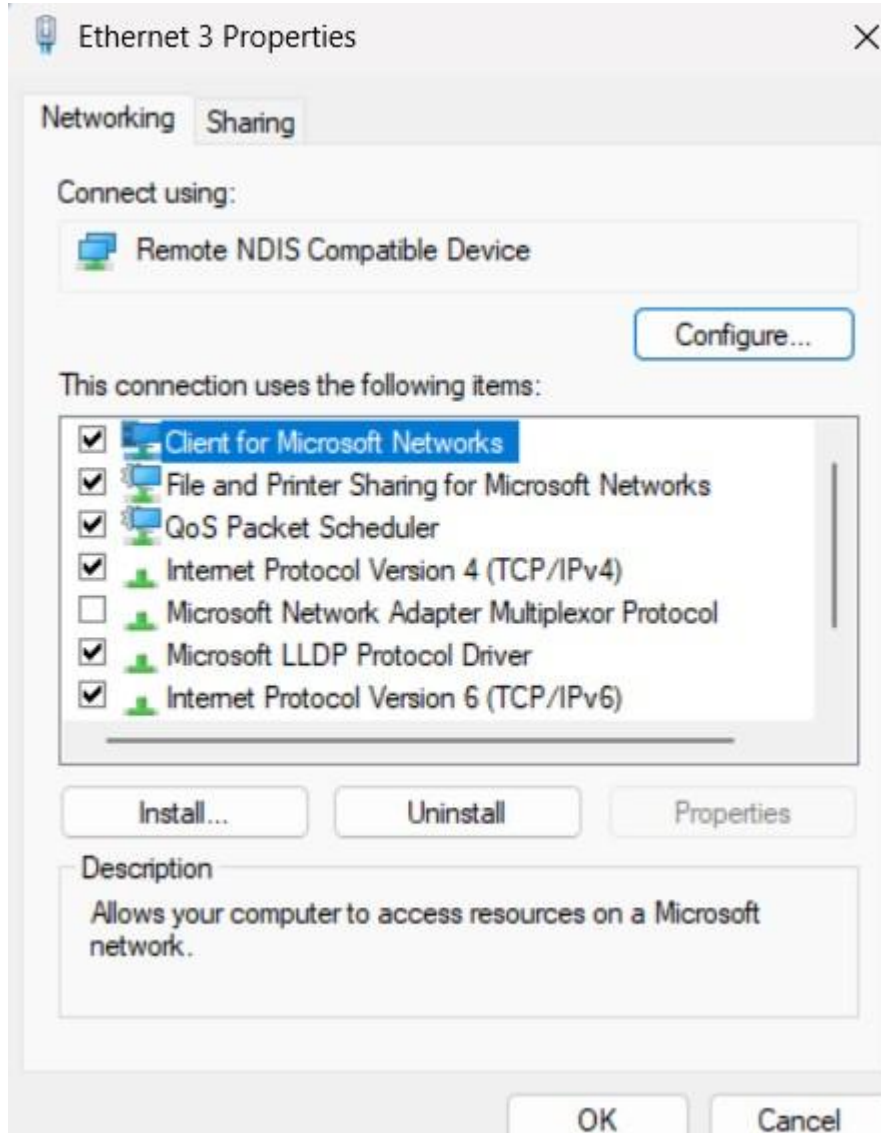
Right-click on "Remote NDIS Compatible Device" and select "Properties"



DeviceLab

EXTRACTING VALUE

Select "Internet Protocol Version 4 (TCP/IPv4)" and press "Properties"





DeviceLab

EXTRACTING VALUE

Select "Use the following IP address"

Internet Protocol Version 4 (TCP/IPv4) Properties

General Alternate Configuration

You can get IP settings assigned automatically if your network supports this capability. Otherwise, you need to ask your network administrator for the appropriate IP settings.

☒ Obtain an IP address automatically

☐ Use the following IP address:

IP address: . . .

Subnet mask: . . .

Default gateway: . . .

☒ Obtain DNS server address automatically

☐ Use the following DNS server addresses:

Preferred DNS server: . . .

Alternate DNS server: . . .

☐ Validate settings upon exit

Advanced...

OK Cancel



DeviceLab

EXTRACTING VALUE

Type IP address: 172.30.0.1 and Subnet: 255.255.255.0

Internet Protocol Version 4 (TCP/IPv4) Properties

General

You can get IP settings assigned automatically if your network supports this capability. Otherwise, you need to ask your network administrator for the appropriate IP settings.

☐ Obtain an IP address automatically

☒ Use the following IP address:

IP address: 172 . 30 . 0 . 1

Subnet mask: 255 . 255 . 255 . 0

Default gateway: . . .

☐ Obtain DNS server address automatically

☒ Use the following DNS server addresses:

Preferred DNS server: . . .

Alternate DNS server: . . .

☐ Validate settings upon exit

Advanced...

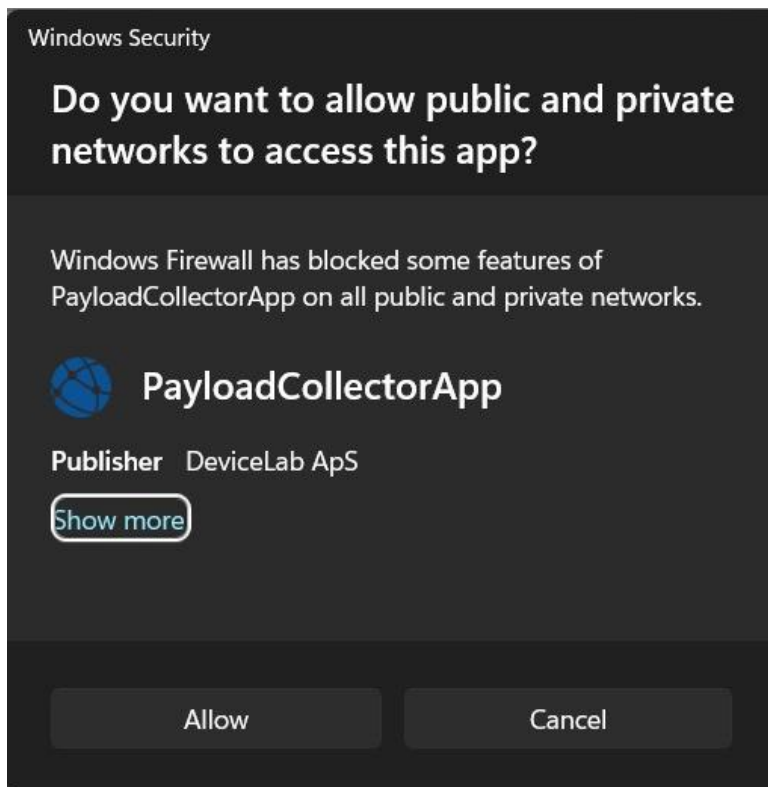
OK Cancel

Press "OK" -> "Close" – and reopen the Payload Collector app.



First run of Payload Collector will trigger a Windows Firewall Warning...

NOTE! – It is important that the "Payload Mioty Collector Device" is connected while the first run is performed... – otherwise the "Firewall" rule may not be triggered correctly!

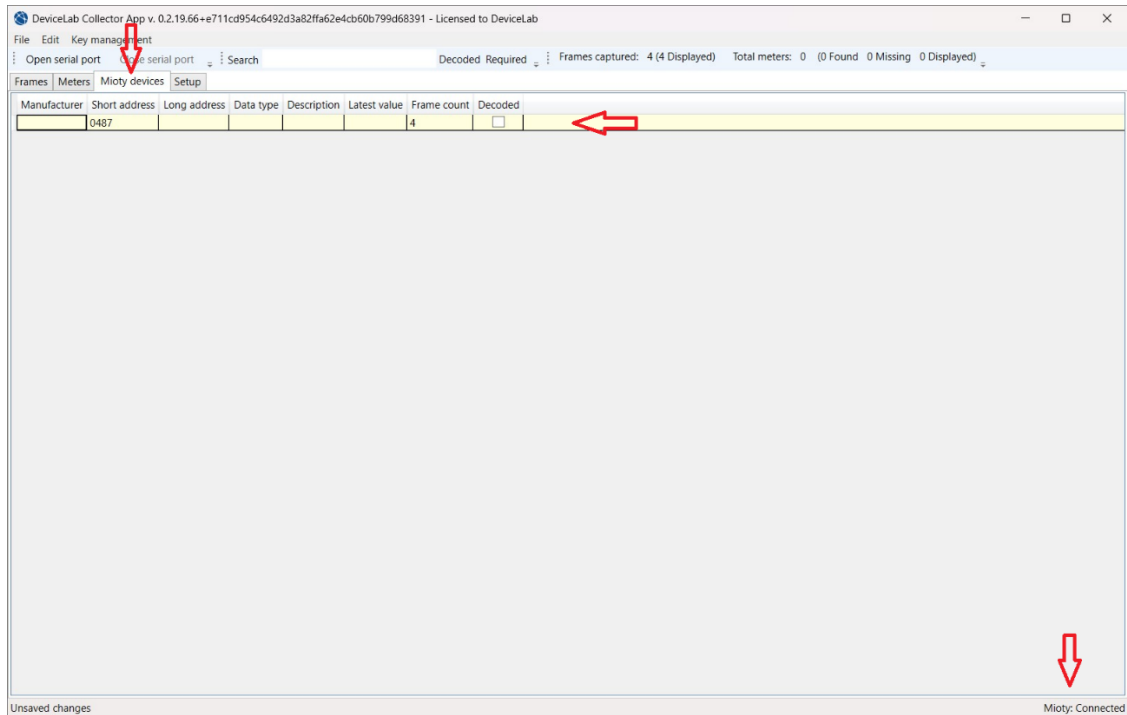


Press "Allow" to allow communication between the "Payload Mioty Collector Device" and the "Payload Collector" App.

Note! - For third-party firewall programs, look for information in its documentation!

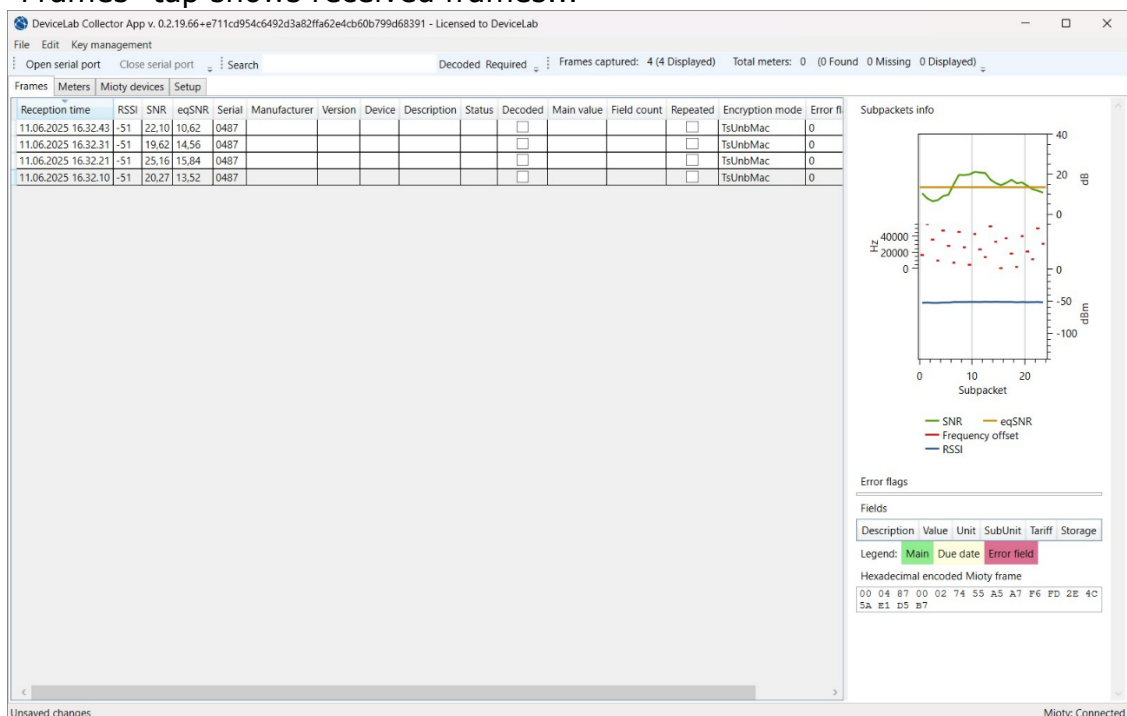


The Mioty connection status change to "Connected" and the "Mioty devices" tap now show received devices...



Note! – that it can take 15-20 sec. to initialize the connection.

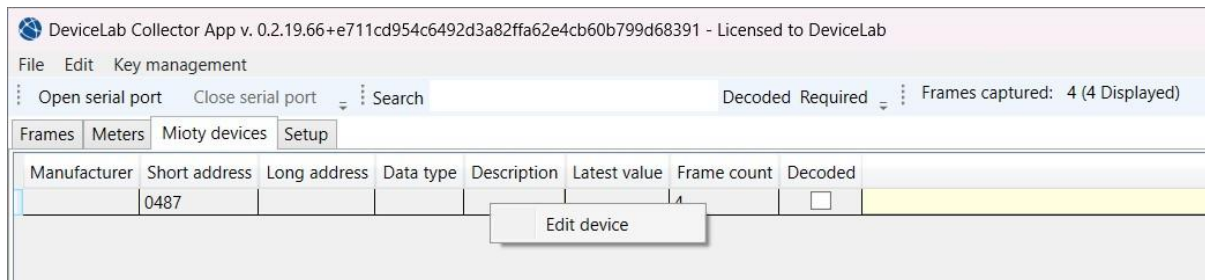
"Frames" tap shows received frames...



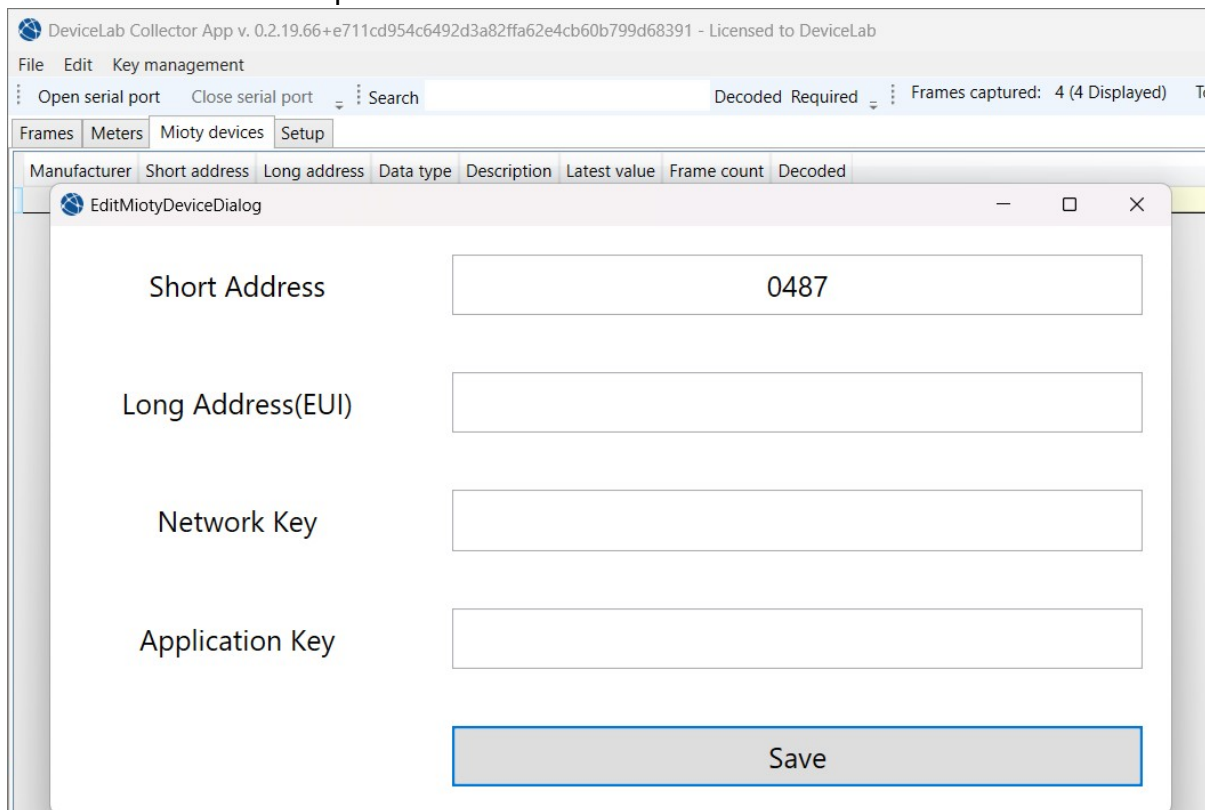


How to add Mioty decryption keys to the "Payload Collector" App.

On "Mioty devices" tap, - Right-click on the received device where you want to add a decryption key and press "Edit device"!



Enter the information provided from the manufacture



- and you're good to go!!!